

The background of the slide is a light gray gradient, decorated with numerous realistic water droplets of various sizes. Some droplets are at the top left, others are scattered along the right edge, and a few are at the bottom. The main title is centered in the upper half of the slide.

NDOT MAJOR PROJECTS AND INNOVATIVE DELIVERY

2017 NEVADA TRANSPORTATION CONFERENCE

COLE MORTENSEN, PE

ASST. CHIEF OF PROJECT MANAGEMENT

PM DIVISION RESPONSIBILITIES

- FHWA MAJOR PROJECTS
 - TOTAL PROJECT COST > \$100 MILLION
 - FHWA PROJECT MANAGEMENT PLAN & FINANCE PLAN
- NDOT'S MAJOR CAPACITY IMPROVEMENT PROJECTS (TYPICALLY > \$25 MILLION)
- PIONEER PROGRAM
 - INNOVATIVE PROJECT DELIVERY (CMAR, DB, DBF)
 - UNSOLICITED PROPOSALS

NEVADA MEGA/MAJOR PROJECTS (LATE 2007 - ESTIMATES)

SOUTHERN NEVADA

- INTERSTATE 15 – 15 PROJECTS, \$4.6 – \$5.7 BILLION
- I-515/US 95 – 4 PROJECTS, \$3.3 - \$4.4 BILLION
- US 95 NW – 5 PROJECTS, \$0.6 – \$0.7 BILLION

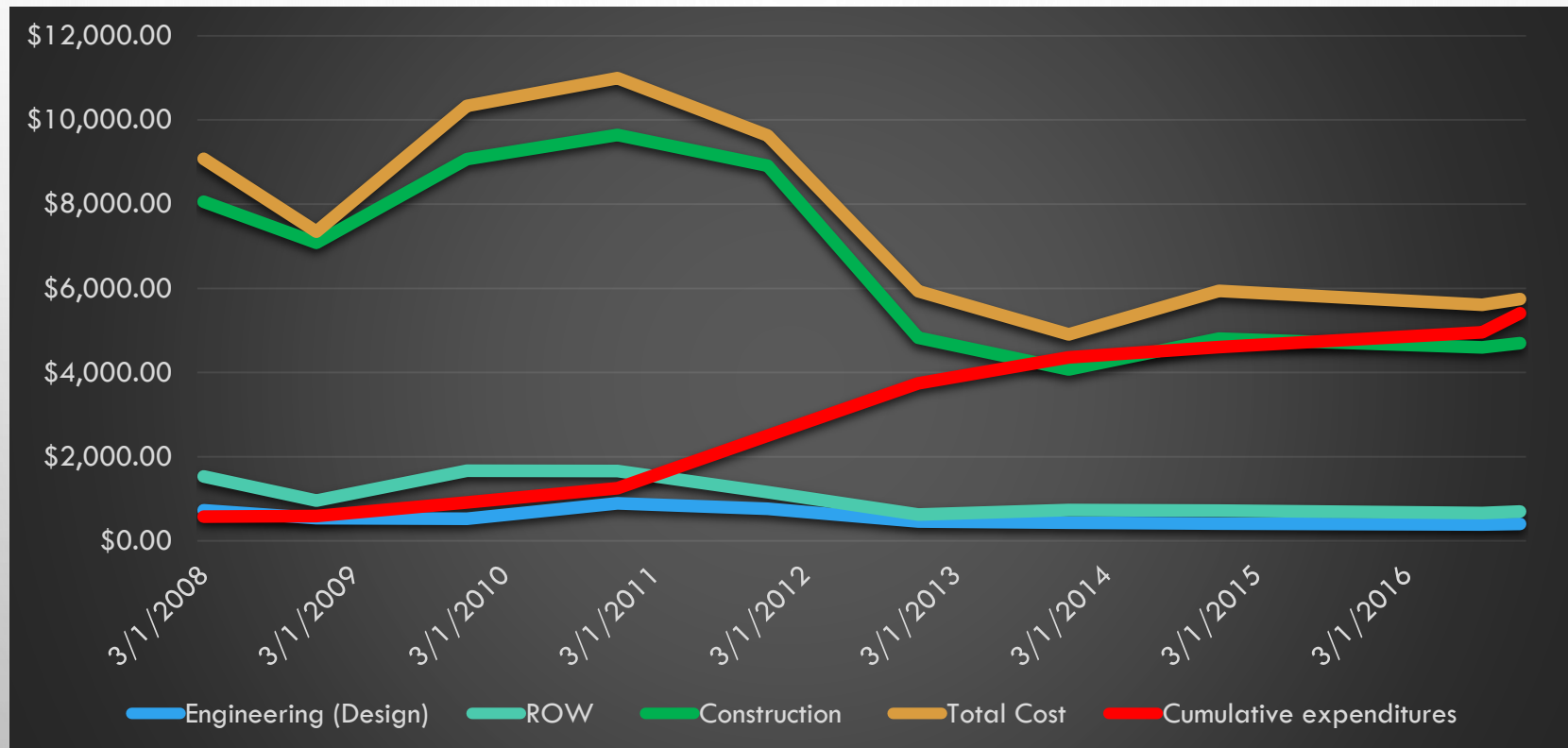
NORTHERN NEVADA

- I-80, US 395, PYRAMID HWY - 8 PROJECTS, \$2.5 - \$3.2 BILLION

TOTAL – STATEWIDE

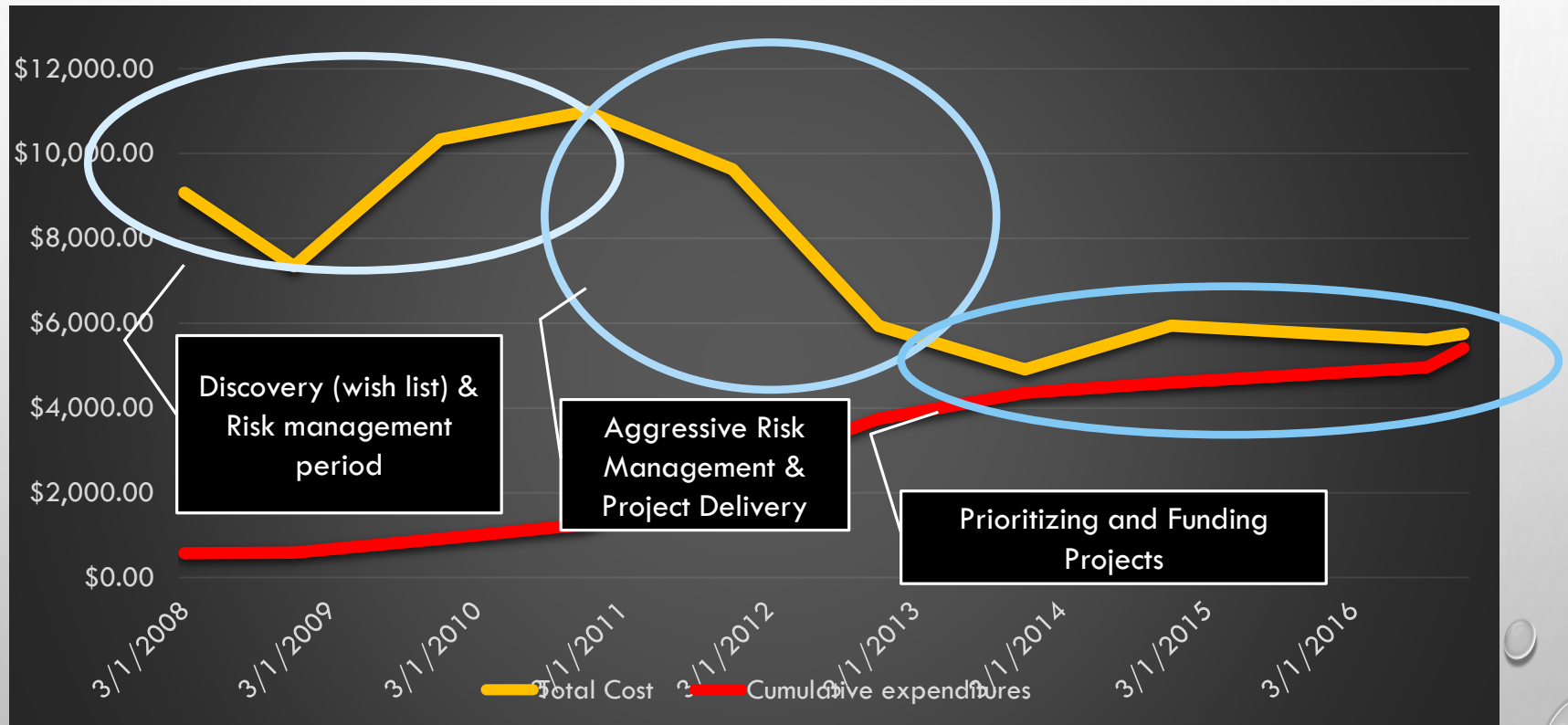
- \$11 - \$14 BILLION

MAJOR AND MEGA PROJECTS - ESTIMATED COST TREND (HIGH RANGE OF ESTIMATE)



Major Projects (>\$100 M); Mega Projects (>\$500 M)

BALANCING NEED VS AVAILABLE FUNDING



Major Projects (>\$100 M); Mega Projects (>\$500 M)

NEVADA MEGA PROJECTS (>\$500 M) ESTIMATED COST TREND (70 PERCENTILE)

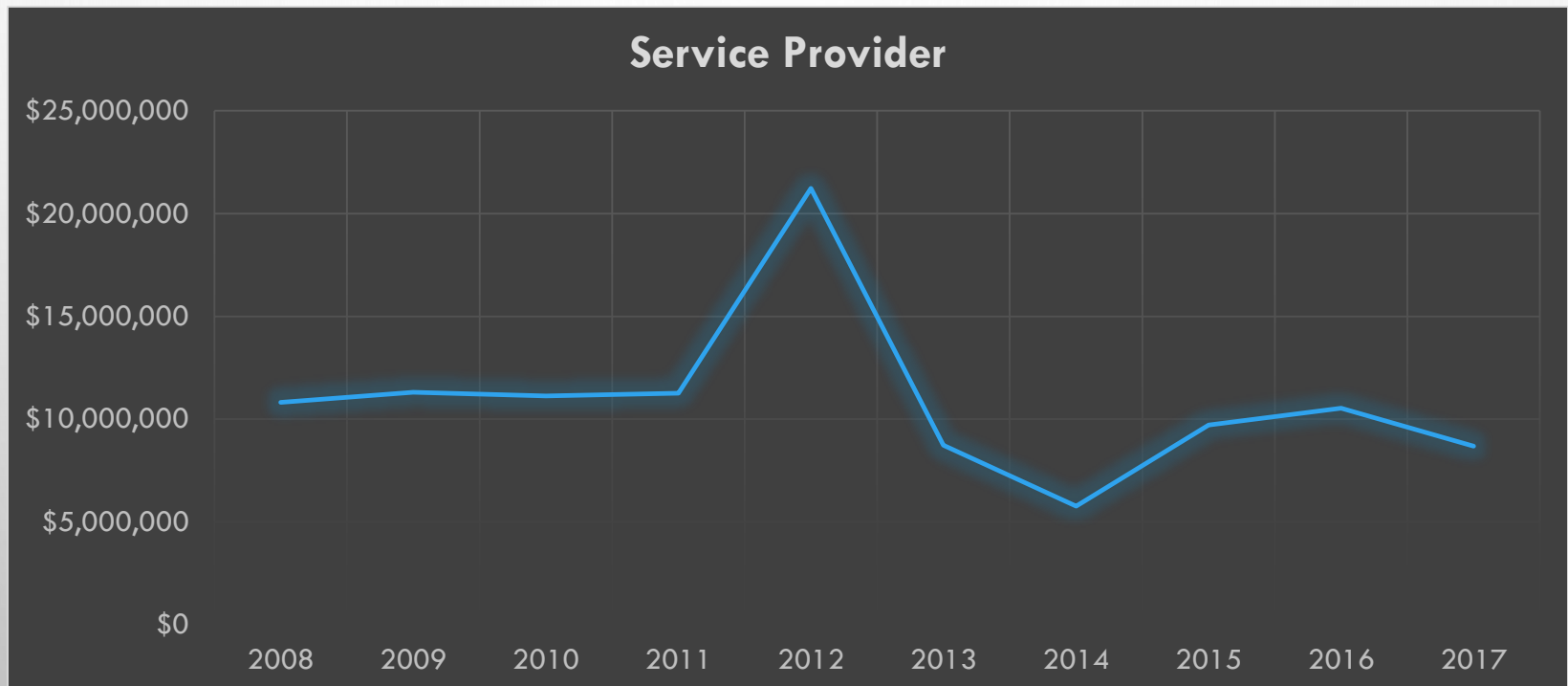


EXAMPLE OF COST/RISK MANAGEMENT – PROJECT NEON

IN 2008 NDOT EMBARKED ON A MISSION TO CUT AND CONTROL COSTS AND MAKE THE PROJECT NEON MORE AFFORDABLE. THE RESULT WAS HUNDREDS OF MILLIONS OF DOLLARS OF SAVINGS AND A PHASED APPROACH TO IMPLEMENTING THE PROJECT.

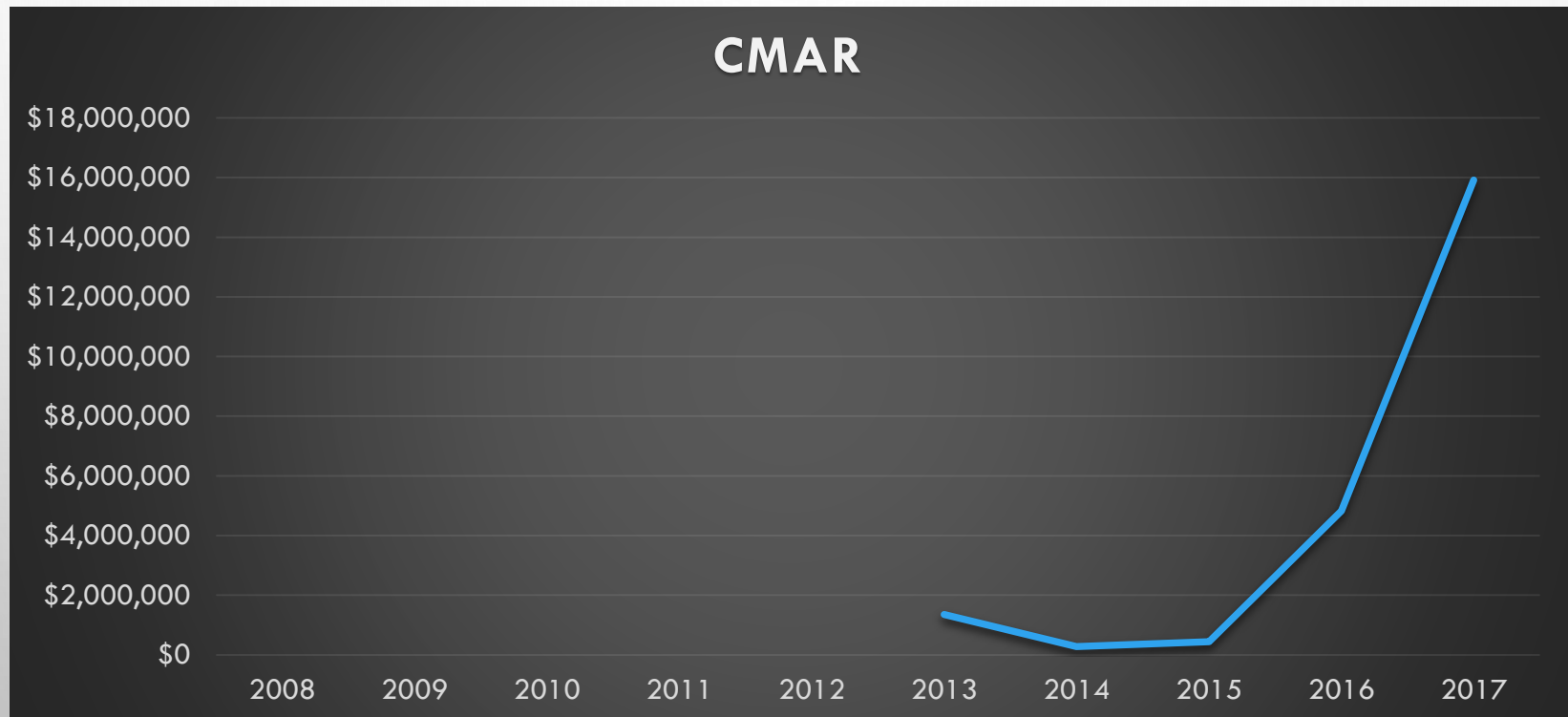
Minimize ROW Impact	2008
NEON VA Study	October 2008
CEVP #1	December 2008
CEVP #2	October 2010
Scoping Workshop	November 2010
Phase 1 CEVP	March 2011
TAC Workshop	August 2011
MLK+I VA Study	November 2011
Every Day Counts	December 2011
ABC Workshop	March 2012
Every Day Counts	September 2012
Risk Allocation Workshop	June 2013
P3 R/W CEVP	September 2013
2013 ICE	October 2013
P3 R/W CEVP	January 2014
Future Phase CEVP	February 2014
P3 Construction CEVP	April 2014

ANNUAL PROGRAM EXPENDITURES – PM DIVISION



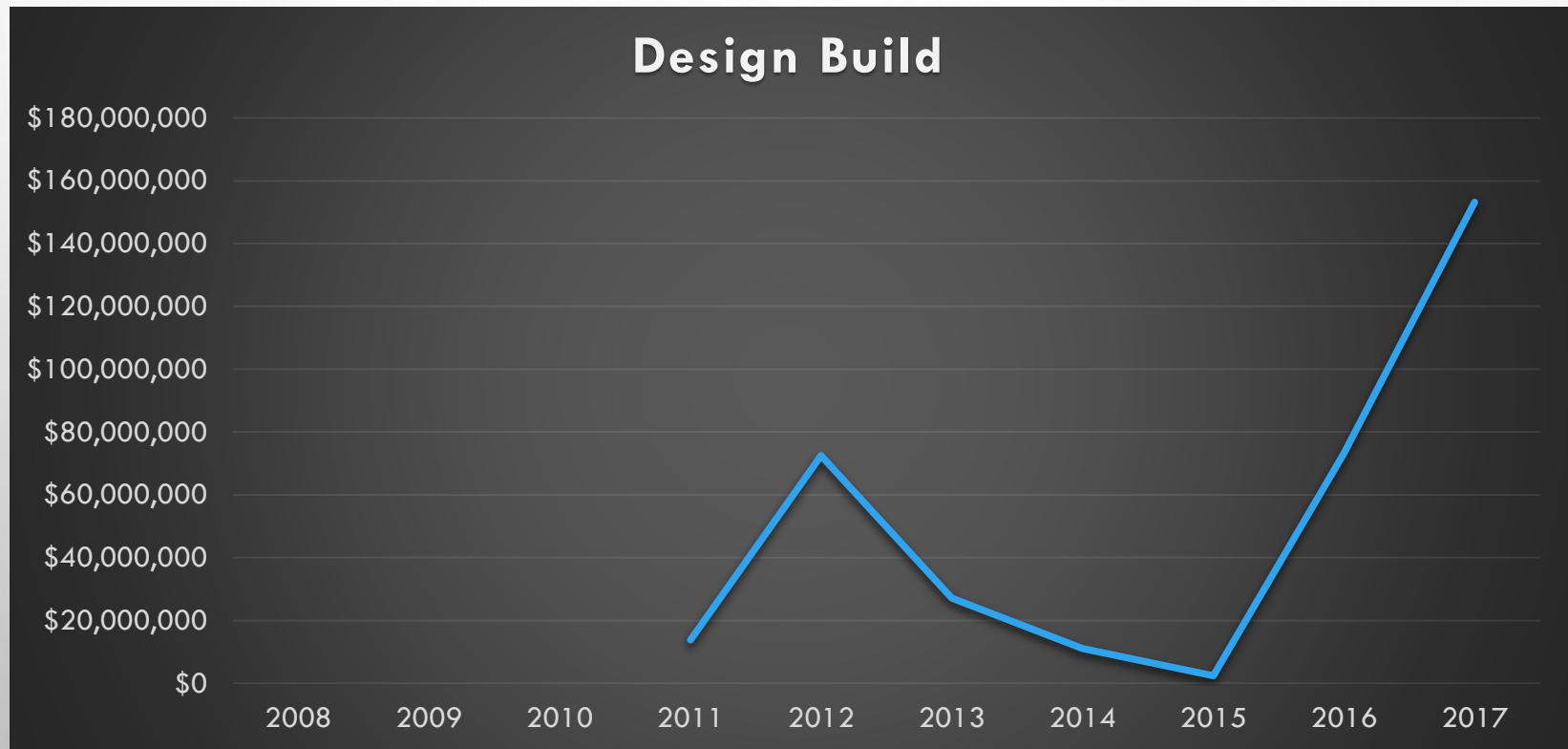
DB Engineering costs not accurately captured

ANNUAL PROGRAM BUDGETS – PM DIVISION



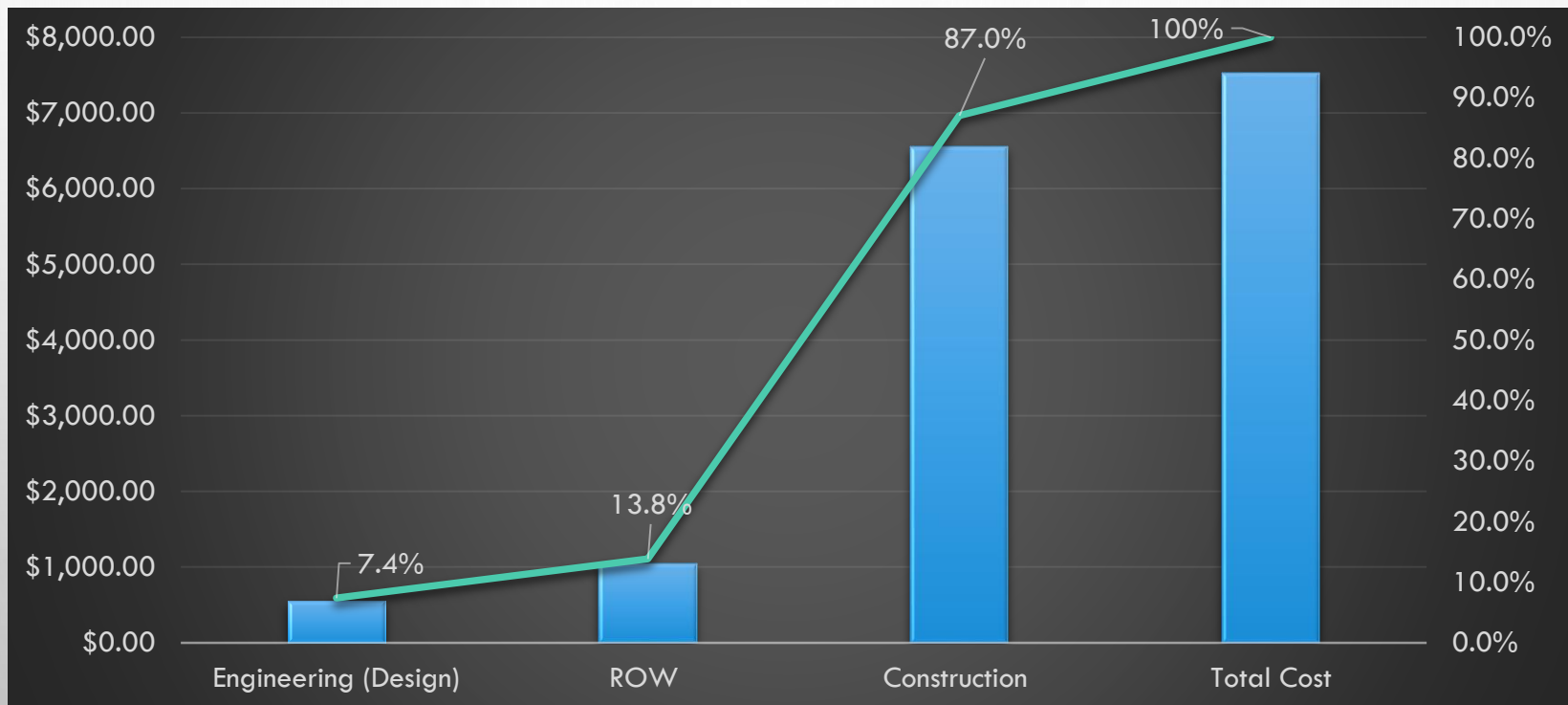
Construction Costs for SR 28 and I-80 Verdi not represented

ANNUAL PROGRAM BUDGETS – PM DIVISION



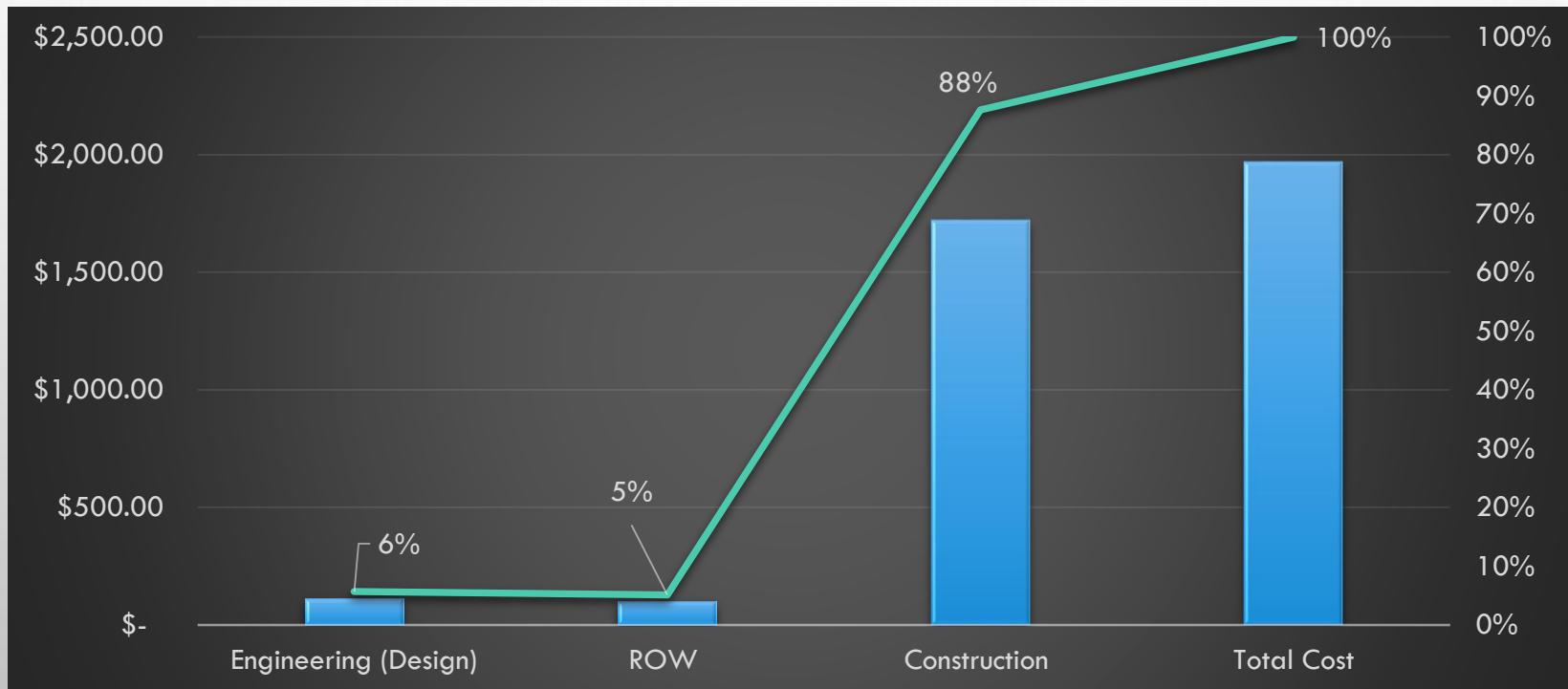
Construction Costs for I-15 North not represented

AVERAGE PROGRAM ESTIMATES



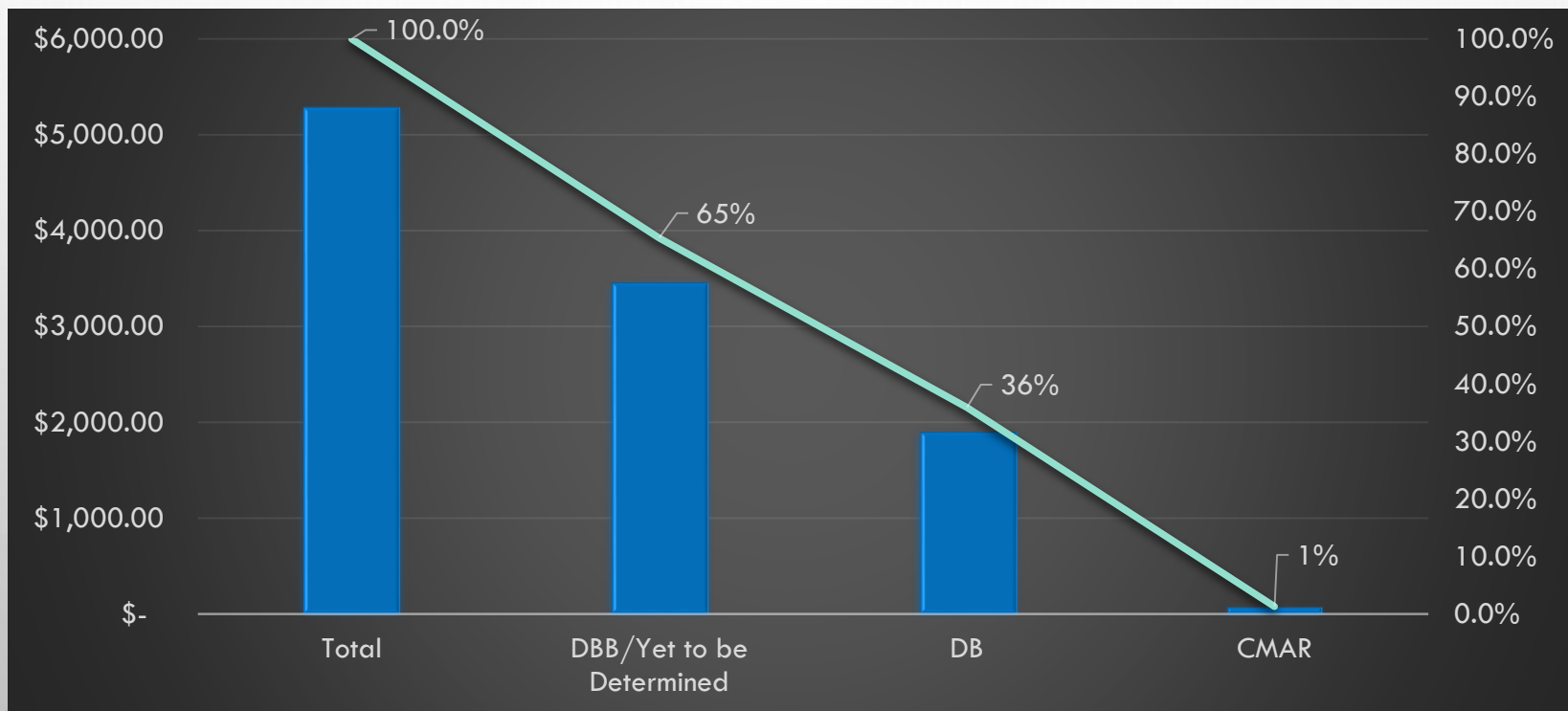
DB Engineering costs not accurately captured

COMPLETED PROJECTS

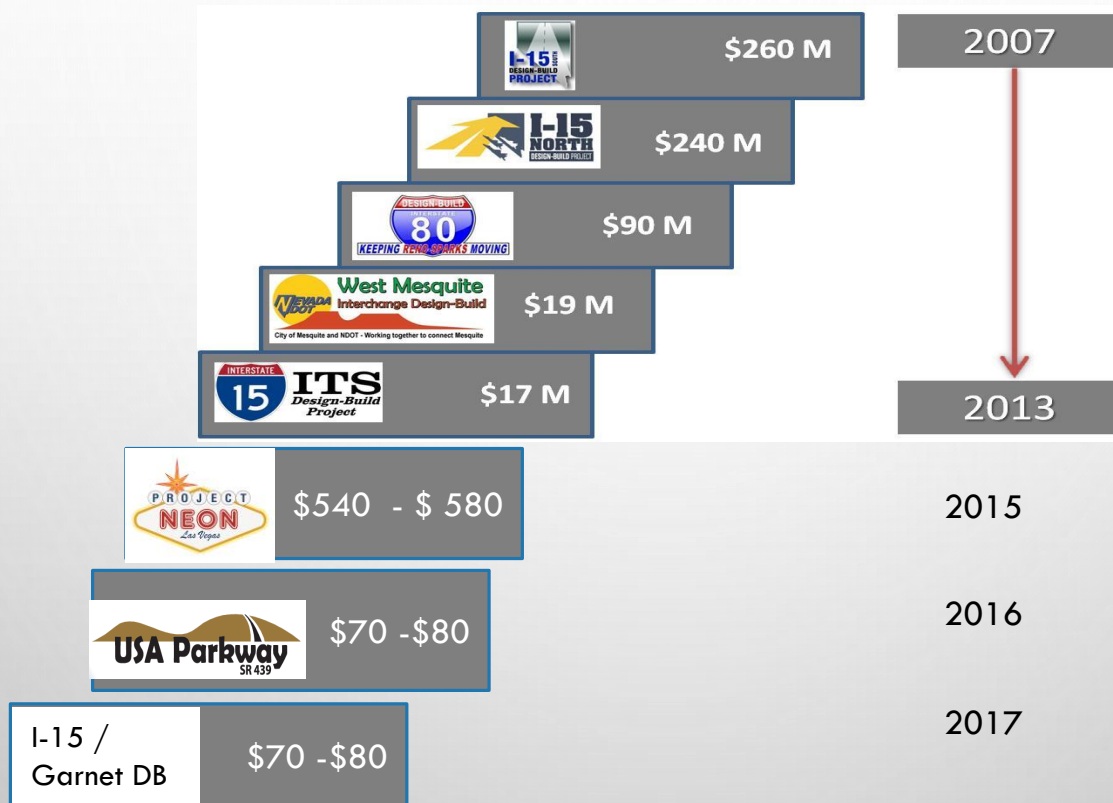


DB Engineering costs not accurately captured

DELIVERY TYPE – TOTAL COSTS



NDOT ADMINISTERED DB PROJECTS



CMAR PROJECTS

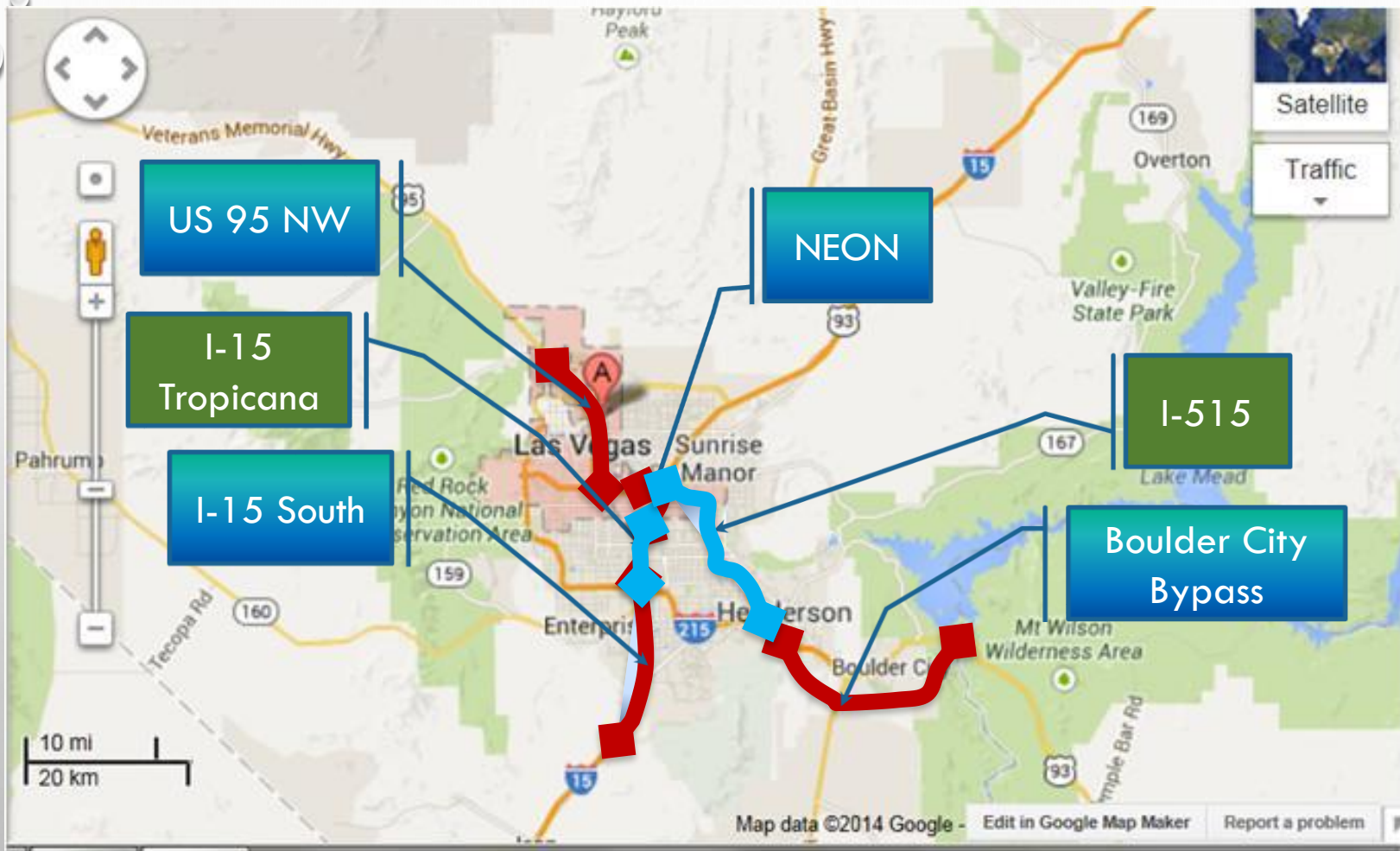
- COMPLETED:
 - MOANA DDI
 - TAHOE BIKE PATH
 - CARLIN TUNNELS
 - KINGSBURY GRADE
- DESIGN PHASE
 - CHARLESTON INTERCHANGE
- CONSTRUCTION PHASE
 - TROPICANA ESCALATORS
 - VERDI BRIDGES
 - SR28 FLAP BIKE PATH





FHWA'S MAJOR PROJECTS

FHWA MAJOR PROJECTS - CLARK



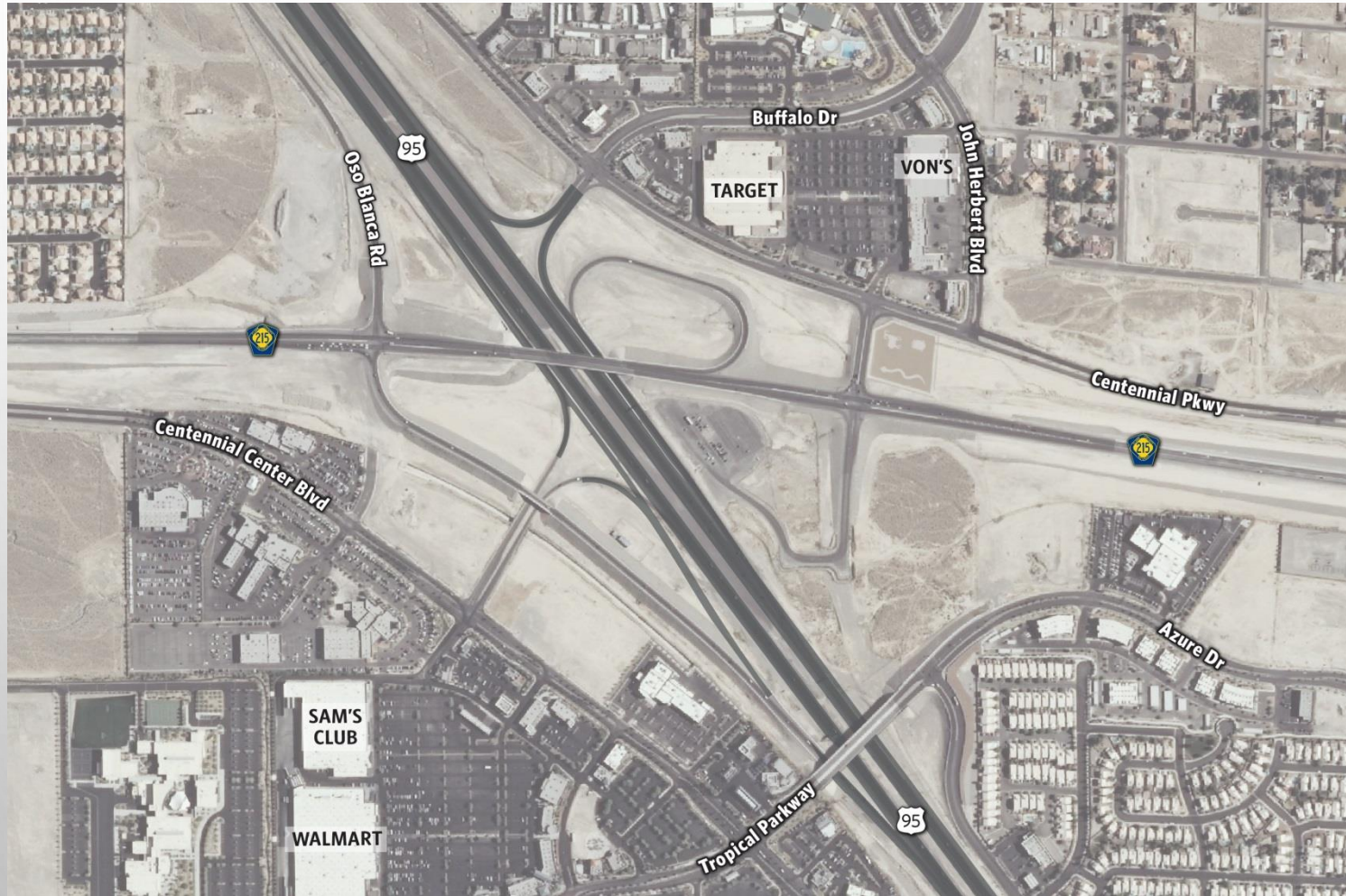
The slide features a light gray background with a subtle radial gradient. In the top-left and bottom-right corners, there are clusters of realistic water droplets of various sizes, rendered with soft shadows and highlights to give them a three-dimensional appearance. Centered on the slide is the title text.

FHWA'S MAJOR PROJECTS STATUS

US 95 NW



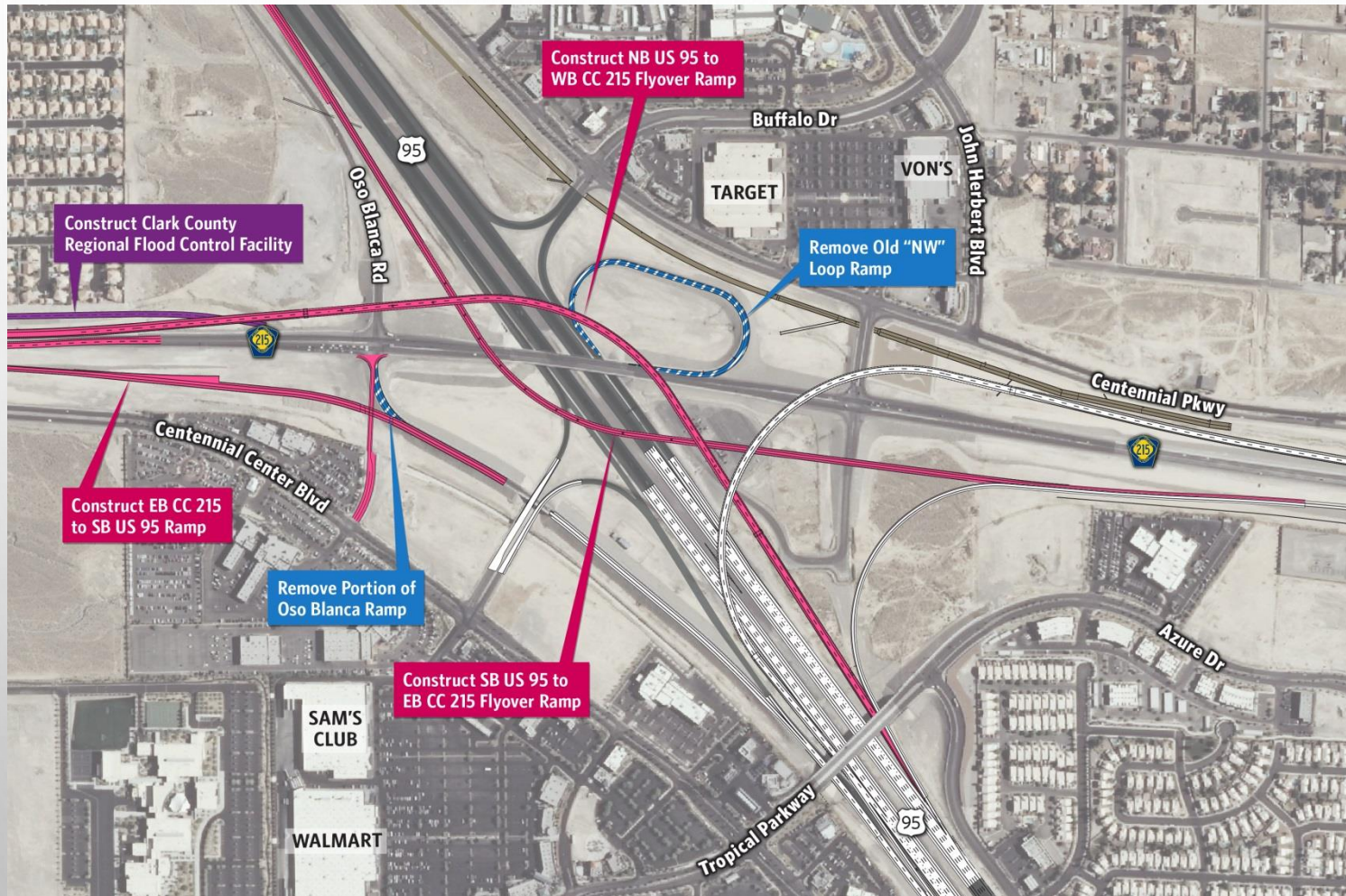
BEFORE PHASE 3 CONSTRUCTION



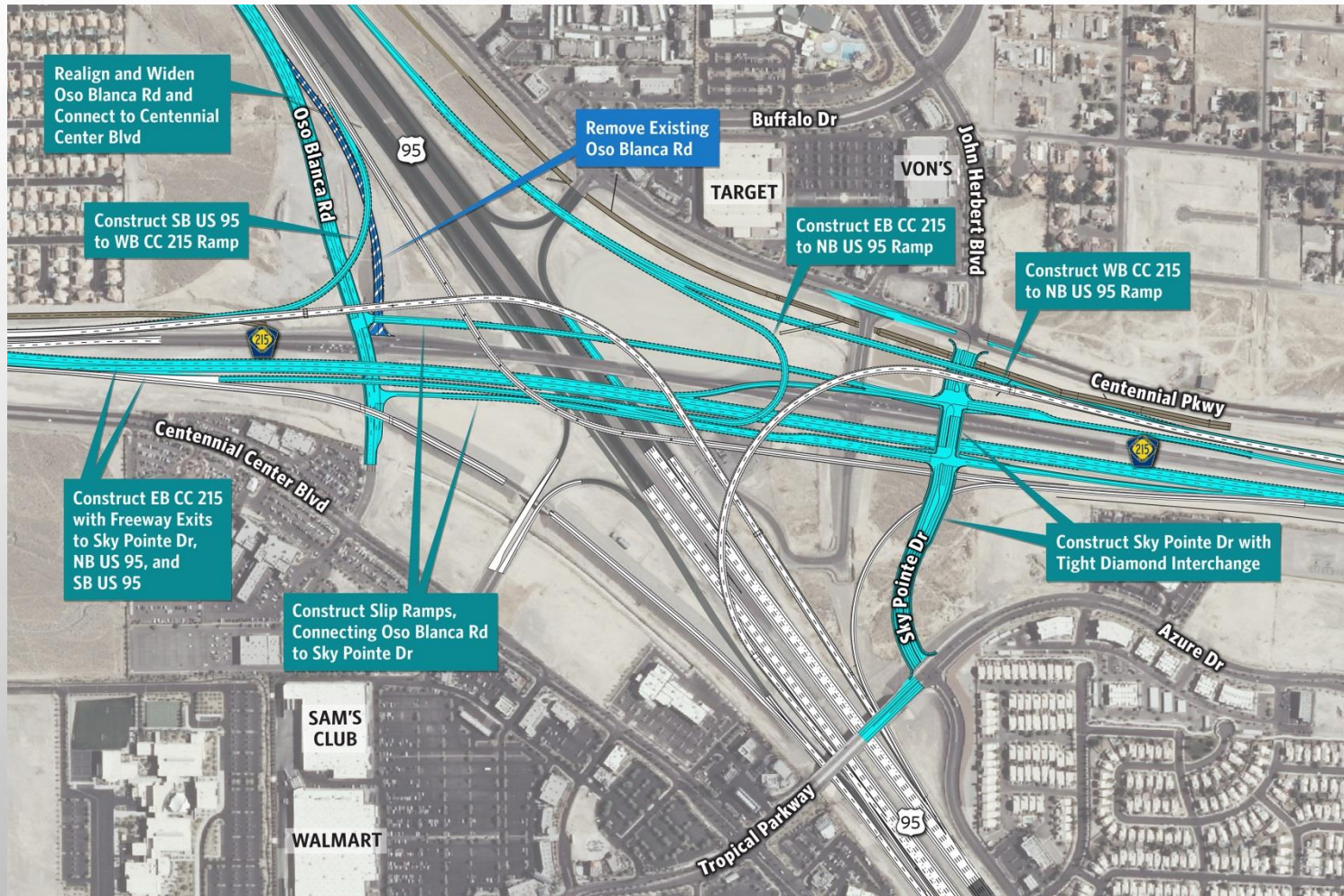
PHASE 3A



PHASE 3C



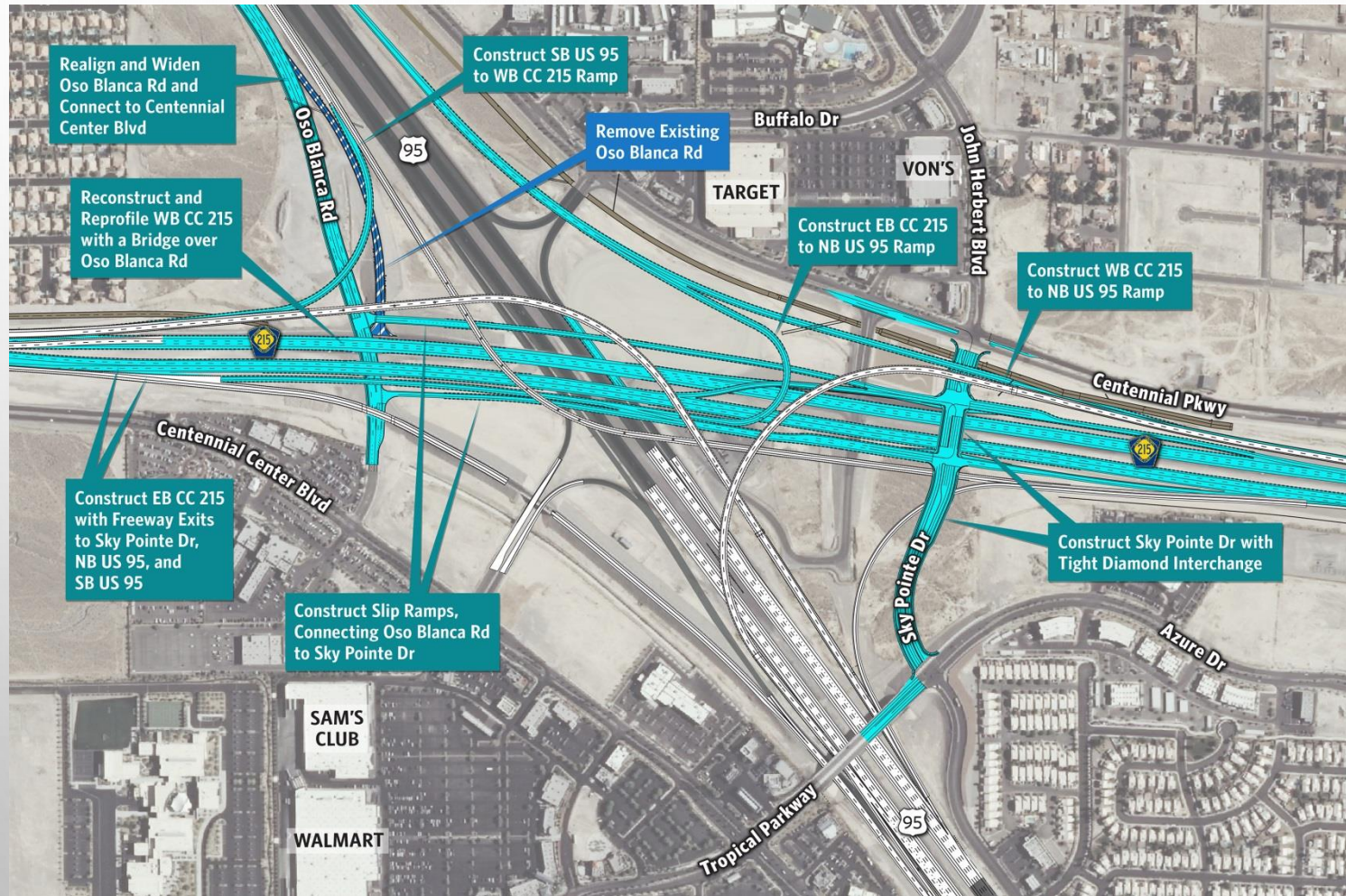
PHASE 3D



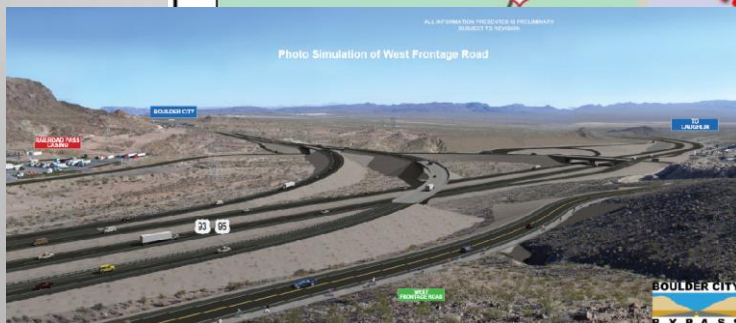
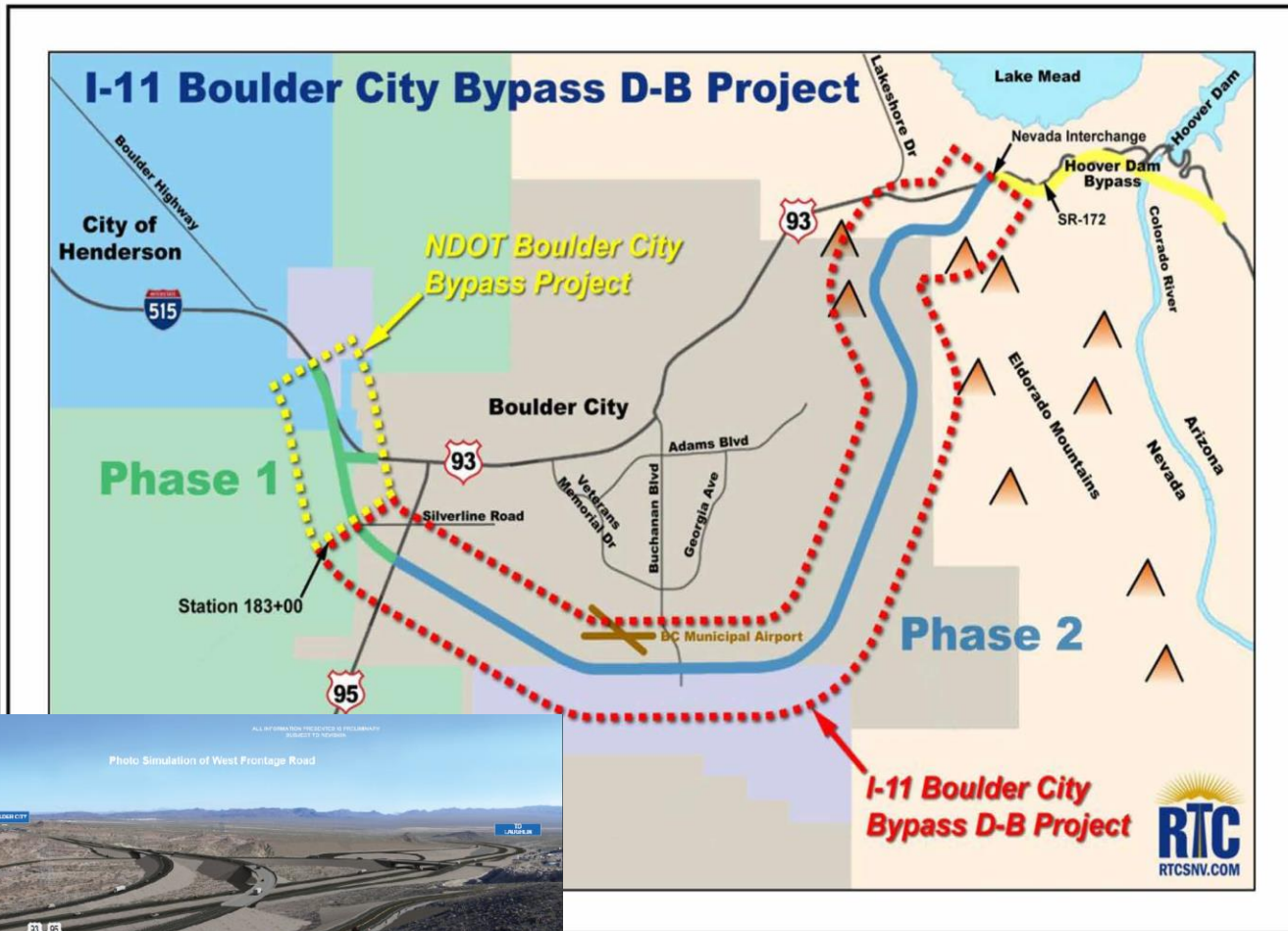
PHASE 3E



PHASE 3D/E



BOULDER CITY BYPASS



PROJECT NEON



I-15 South PROJECT LOCATIONS

Projects:

- 1) I-15 South Sloan Road Interchange •
- 2) I-15 South Bermuda Road Interchange •
- 3) I-15 South Starr Avenue Interchange •
- 4) I-15 South Cactus Avenue Interchange •
- 5) I-15 South Pebble Road Overpass •
- 6) I-15 South Freeway Improvements (Phase 1A):

From Blue Diamond Road to Tropicana Avenue

- 7) I-15 South Phase 1B: —
- From Blue Diamond Road to Tropicana Avenue
- 8) I-15 South Phase 2A widening: —
- From Sloan Road to Blue Diamond Road
- 9) I-15 South Phase 2B: —
- From Sloan Road to Tropicana Avenue

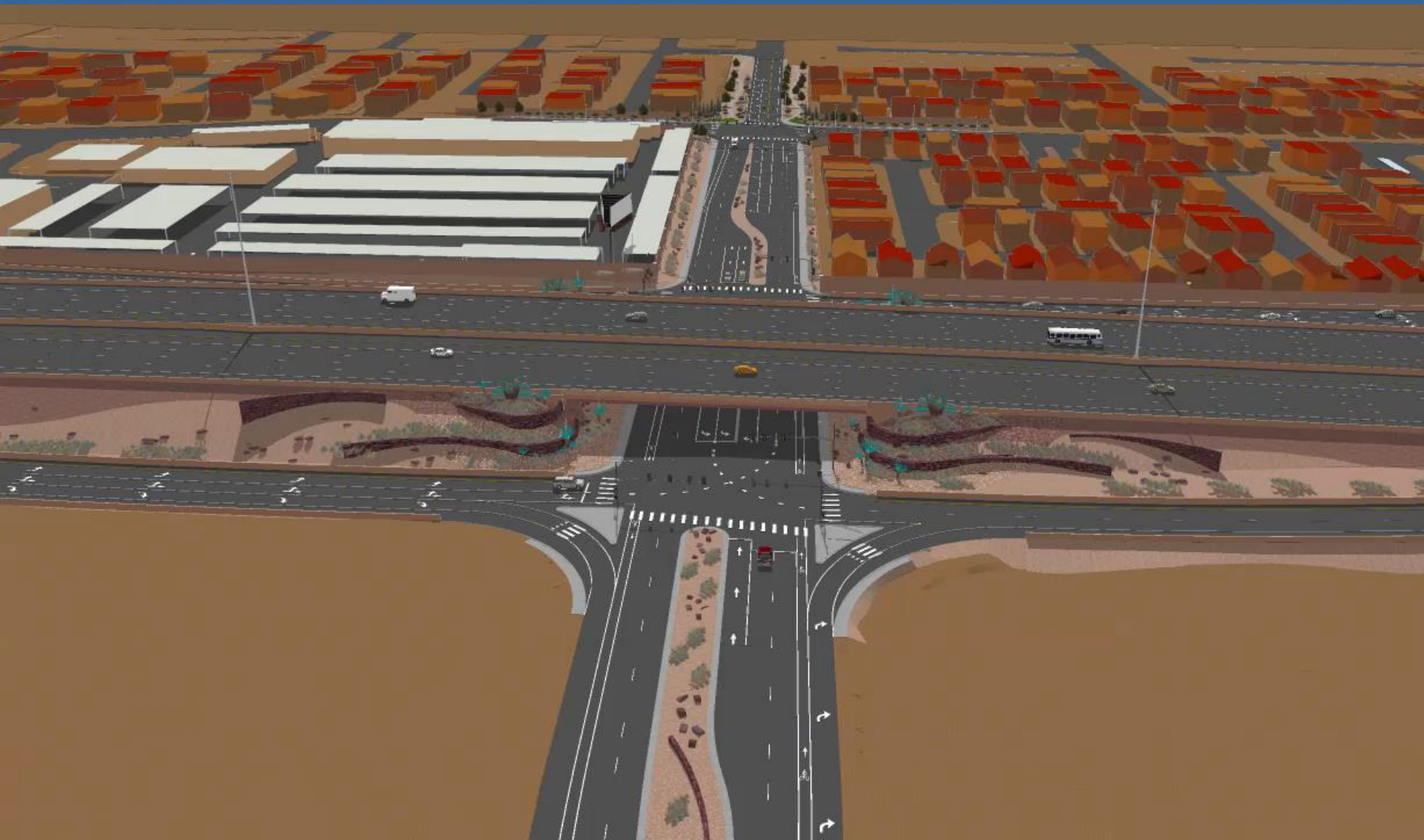
- 10) I-15 South – Las Vegas Boulevard-
Two packages:
Package 1: From Silverado Ranch Boulevard
to Sunset Road —
- Package 2: From St. Rose Parkway to Silverado
Ranch Boulevard. —

North Limit:
Tropicana Ave.



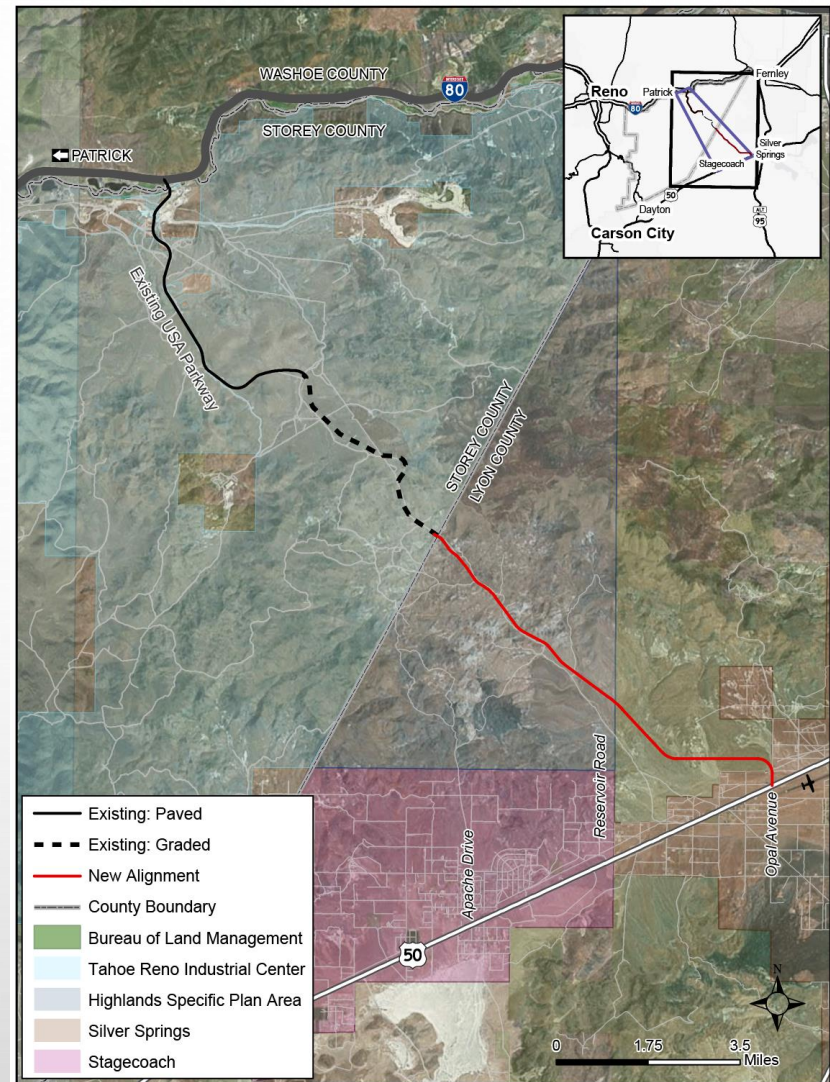
South Limit:
Sloan Rd.

I-15/STARR AVENUE INTERCHANGE



USA Parkway (SR 439)

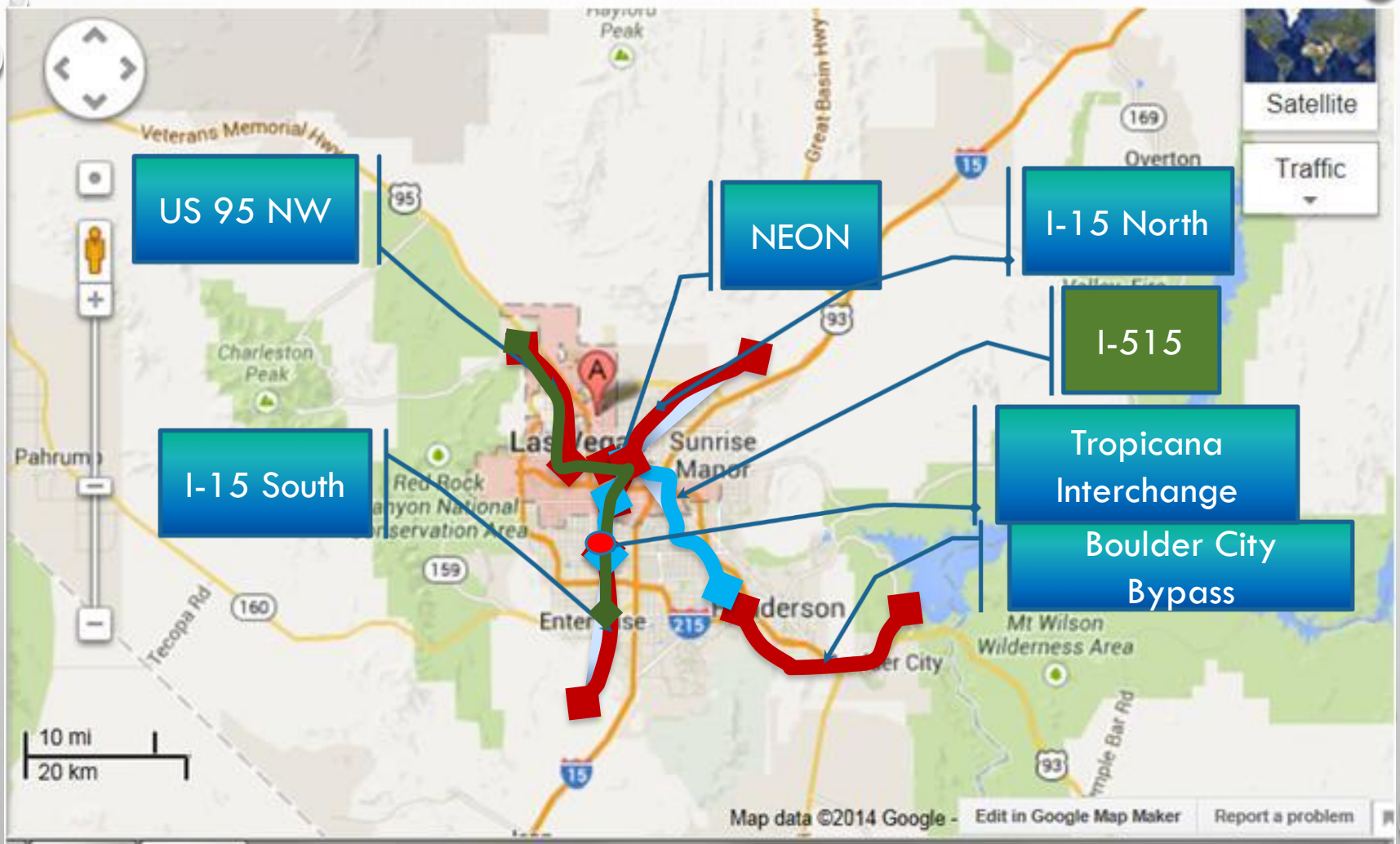
- 6 Miles of Existing Paved Roadway
- 4.4 Miles Existing Graded Road to the Storey/Lyon County line.
- 8.5 miles of New Roadway terminating at Opal Avenue in Silver Springs.



The background of the slide is a light gray gradient. It is decorated with several realistic water droplets of various sizes. In the top-left corner, there is a large droplet and several smaller ones. In the top-right corner, there is a medium-sized droplet and a small one. In the bottom-right corner, there is a large, irregular droplet and several smaller ones. In the bottom-center area, there are a few more small droplets. The text "OTHER PROJECTS" is centered in the middle of the slide.

OTHER PROJECTS

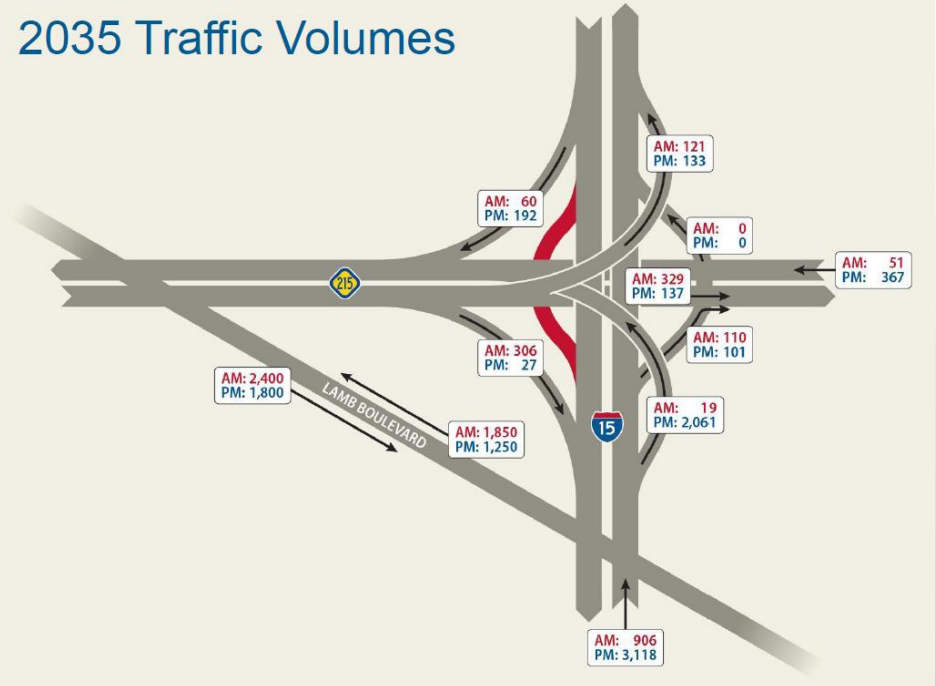
CLARK PROJECTS



I-15 NORTH

Phase II (part 2)

2035 Traffic Volumes



I-15/I-215 Interchange





NDOT MAJOR PROJECTS



Legend

- 1 lane per direction
- HOV Lanes
- Direct Access Ramp
- HOV to HOV Flyover
- Existing Park and Ride
- Planned Park and Ride

0 2.5 5



NDOT MAJOR PROJECTS



Reno/Sparks Spaghetti Bowl



OTHER PROJECTS

ACTIVE

- BOULDER CITY PHASE II – DB
- TROPICANA ESCALATORS - CMAR
- VERDI BRIDGES– BRIDGE SCOUR - CMAR
- SR 28 FLAP BIKEPATH - CMAR
- MCCARRAN/PYRAMID INTERSECTION
- REGIONAL TRAFFIC MODELING
- 515 STEPHANIE
- 515 HORIZON
- US-50 BYPASS
- 1-15/US93 GARNET INTERCHANGE -DB
- I-515/CHARLESTON INTERCHANGE - CMAR

SOMEWHAT ACTIVE

- IVANPAH AIRPORT
- DESERT XPRESS
- WADSWORTH BYPASS
- GEIGER GRADE REALIGNMENT
- SHEEP MOUNTAIN PKWY

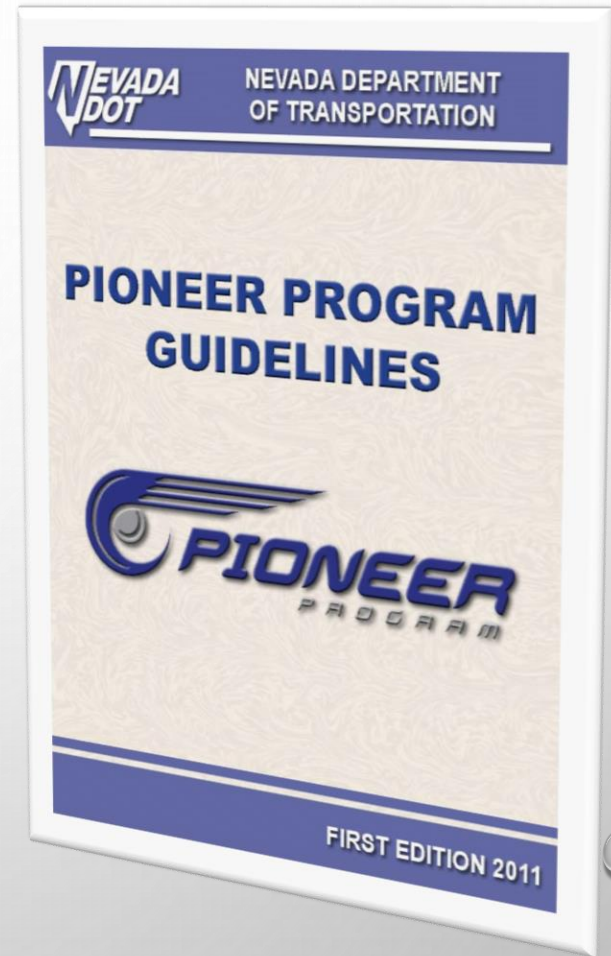


PIONEER PROGRAM



NDOT PIONEER PROGRAM GUIDELINES

- PROVIDES A FRAMEWORK, GENERAL PROCESS, AND STRUCTURE FOR THE IMPLEMENTATION OF DB AND CMAR CONTRACTS
 - PROCUREMENT PROCESS
 - DESIGN PROCESS
 - CONTRACT ADMINISTRATION PROCESS



SR 28 SHARED USE PATH & SAFETY/WATER QUALITY ENHANCEMENT

Construction Manager @ Risk

- Granite Construction

Construction Costs

- \$40 million

Schedule

- Through 2018/2019

Shared Use Path (Incline to Sand Harbor)

- Three plus miles of shared use path from the south end of Incline Village to Sand Harbor
- An undercrossing of SR 28 near Tunnel Creek
- Vista Points (Pullouts)
- Bridges and retaining wall structures



SR 28 SHARED USE PATH & SAFETY/WATER QUALITY ENHANCEMENT

Safety Improvements

- Incline Village to US 50
- 90 stall parking area @ Ponderosa Ranch
- 3 mile no parking zone from along SR 28 from Incline to Sand Harbor;
- Centerline rumble strip
- Emergency pullouts
- Pedestrian Crossing on SR 28 @ Lakeshore Boulevard

WQ Improvements

- Sand Harbor to WC line.
- Erosion control, slope stabilization, & Infiltration basins

ITS Conduit

- 6 miles of conduit from Incline to WC line.



Verdi CMAR Project Overview



I-80 AT TRUCKEE RIVER NEAR VERDI

- *Scour critical structures*
- *River diverting*



- *Recommendation:* *Construct concrete deflector pads and stabilize banks with riprap*

Environmental Factors

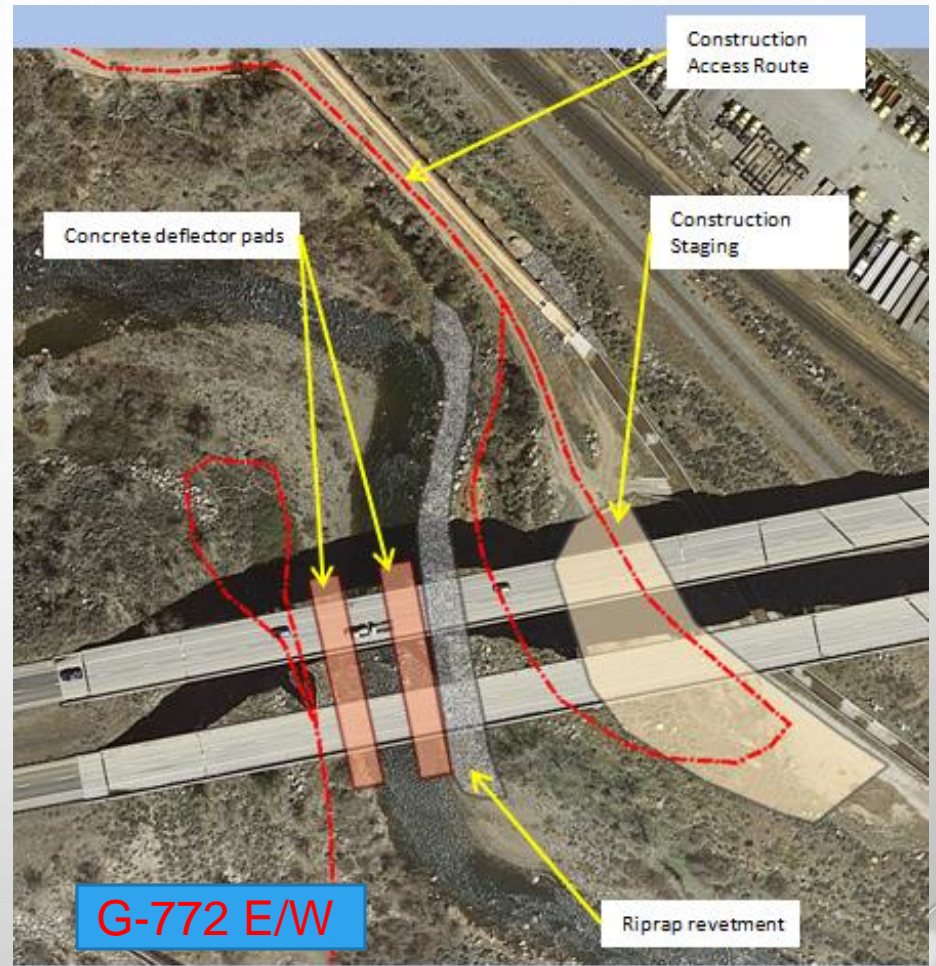
- *River diversion and dewatering*
- *Fish salvage*
- *Restoration of vegetation*
- *Stakeholder coordination*
- *Migratory birds*



G-772 E/W



Access



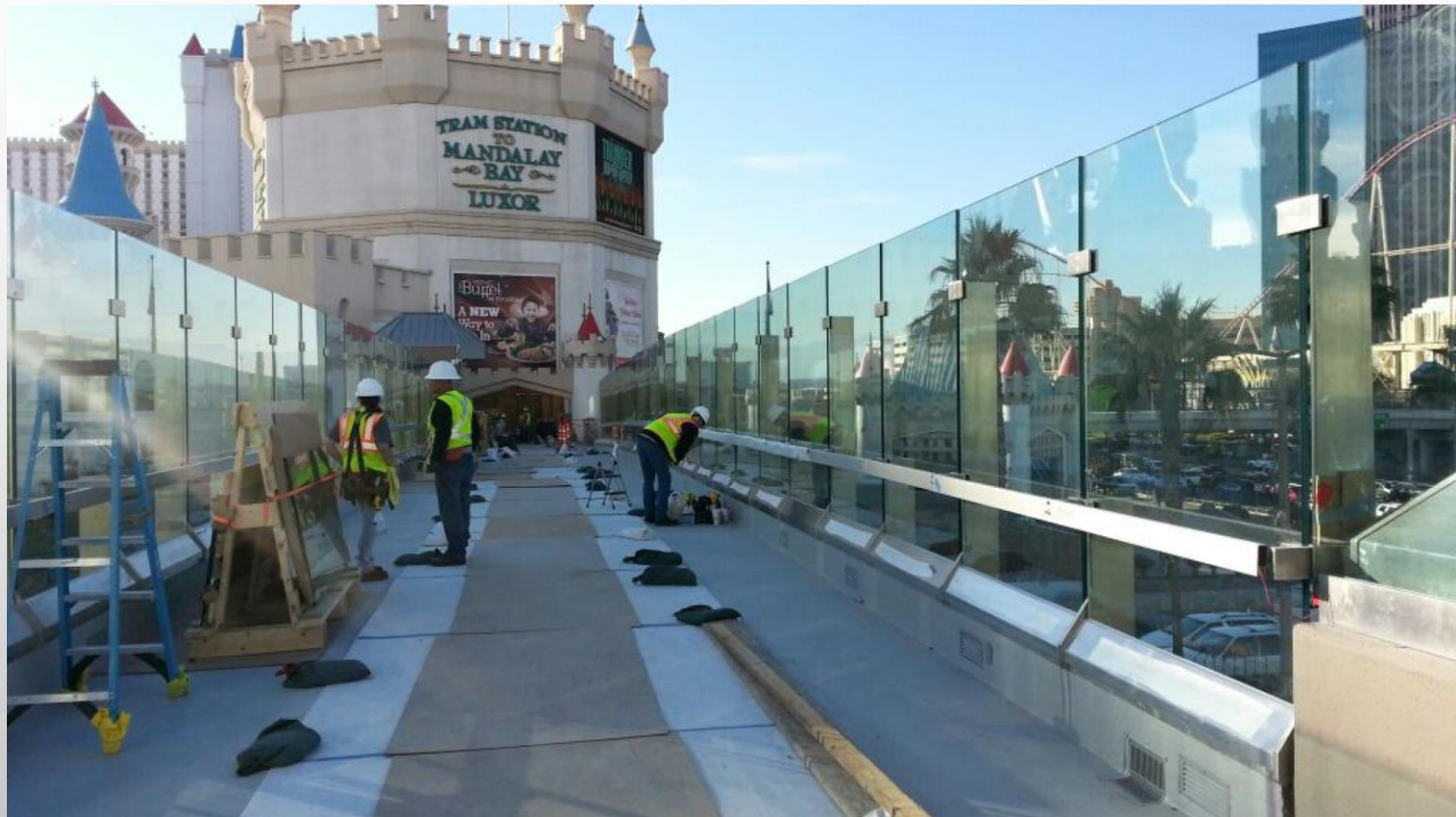
TROPICANA ESCALATOR - CMAR



TROPICANA ESCALATOR - CMAR



TROPICANA ESCALATOR - CMAR



The image features a light gray background with a subtle gradient. In the top-left and bottom-right corners, there are clusters of realistic water droplets of various sizes, rendered with soft shadows and highlights to give them a three-dimensional appearance. Centered on the page is the word "Questions?" in a large, bold, black sans-serif font.

Questions?



www.nevadadot.com

